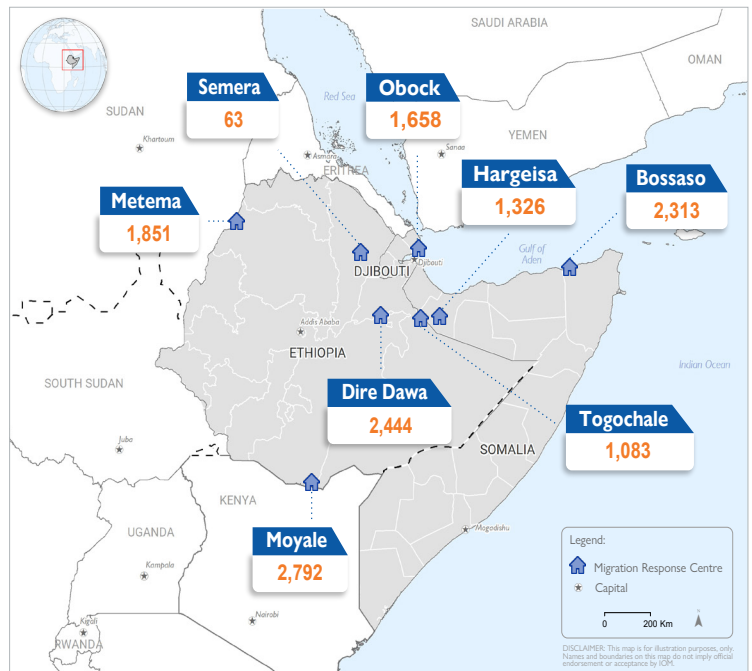


Background

Migration Response Centres (MRCs) are located along key migration corridors to identify migrants in vulnerable situations and provide them with immediate short-term support. MRC services vary based on location and needs, and include food, temporary shelter, and information and service referrals. Eight MRCs were operational in the region in 2022: Hargeisa and Bossaso since 2009, Obock since 2011, Semera and Metema since 2014, Dire Dawa and Togochale since 2019, and Moyale since 2021.

Over 13,500 people sought MRC services in 2022, a 34% increase compared to 2021. In Ethiopia, the number of registered children more than tripled from 2021 (440) to 2022 (1,244). Children on the move continued to be extremely vulnerable; a significant number of children seeking assistance in Ethiopia (85%), Djibouti (63%) and Somalia (45%) were unaccompanied. Overall, movements were overwhelmingly economically driven in 2022; however, more people were pushed to migrate due to conflict in northern Ethiopia and due to climatic changes as drought conditions deteriorated in the region.

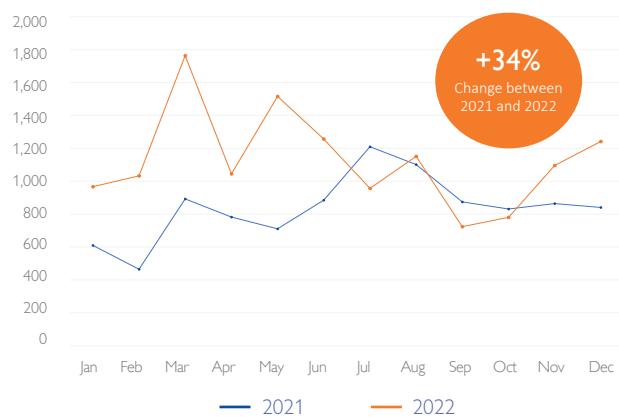
MRC Locations and Registrations



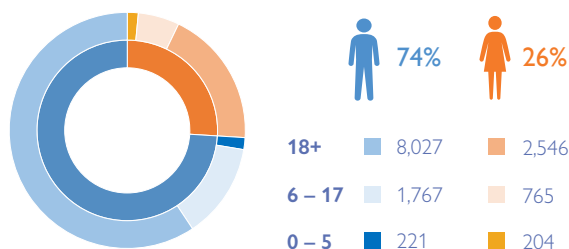
Numbers at a Glance

- 13,530** migrants registered across MRCs in 2022
- 2,957** migrant children registered at MRCs in 2022
- 64%** migrant children who are unaccompanied
- 21%** migrants who reported experiencing detention

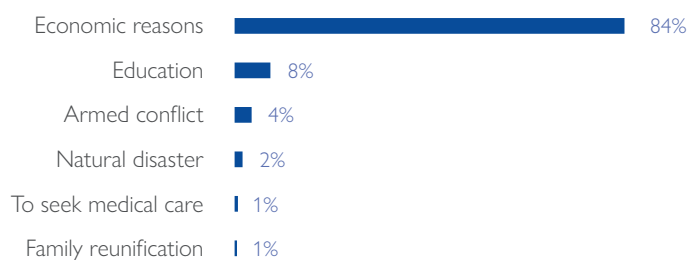
Monthly Registrations in 2021 and 2022



Migrant Sex and Age Breakdown



Most Reported Reasons for Migration¹



¹ Multiple choice question.