

MRRC Network

(Migrant Resource & Response Center)

Jan - Sep 2018

Regional Data Hub | RDH

Migration Resource & Response Centers (MRRCs) are situated along key migration routes, where they fill critical gaps by providing direct assistance, including food and temporary shelter, medical assistance and service referrals to migrants. Working collaboratively, MRRCs bring together key partners to facilitate the identification of migrants in vulnerable situations, and ensure that they receive appropriate, immediate and longer-term support. The services provided by each MRRC vary based on location and needs. The dashboard analyses available data from 11 MRRCs located across the Horn of Africa, Sudan, Kenya, and Yemen.

85% of migrants were assisted in 5 out of 11 MRRCs¹:

- 32%** Nairobi², Kenya
- 18%** Aden, Yemen
- 13%** Obock, Djibouti
- 12%** Khartoum, Sudan
- 11%** Semera, Ethiopia

Age and sex group³



¹ MRRC Khartoum (2,732): estimated number of migrants
² MRRC in Nairobi: ECWC (Eastleigh Community Wellness Centre)
³ Nairobi data was estimated based on January - August data



International Organization for Migration (IOM)
 The UN Migration Agency

Legend:

Country of Nationality:

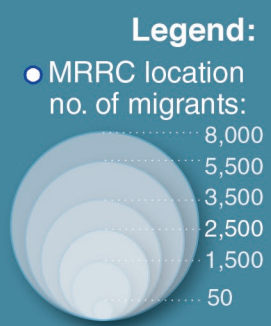
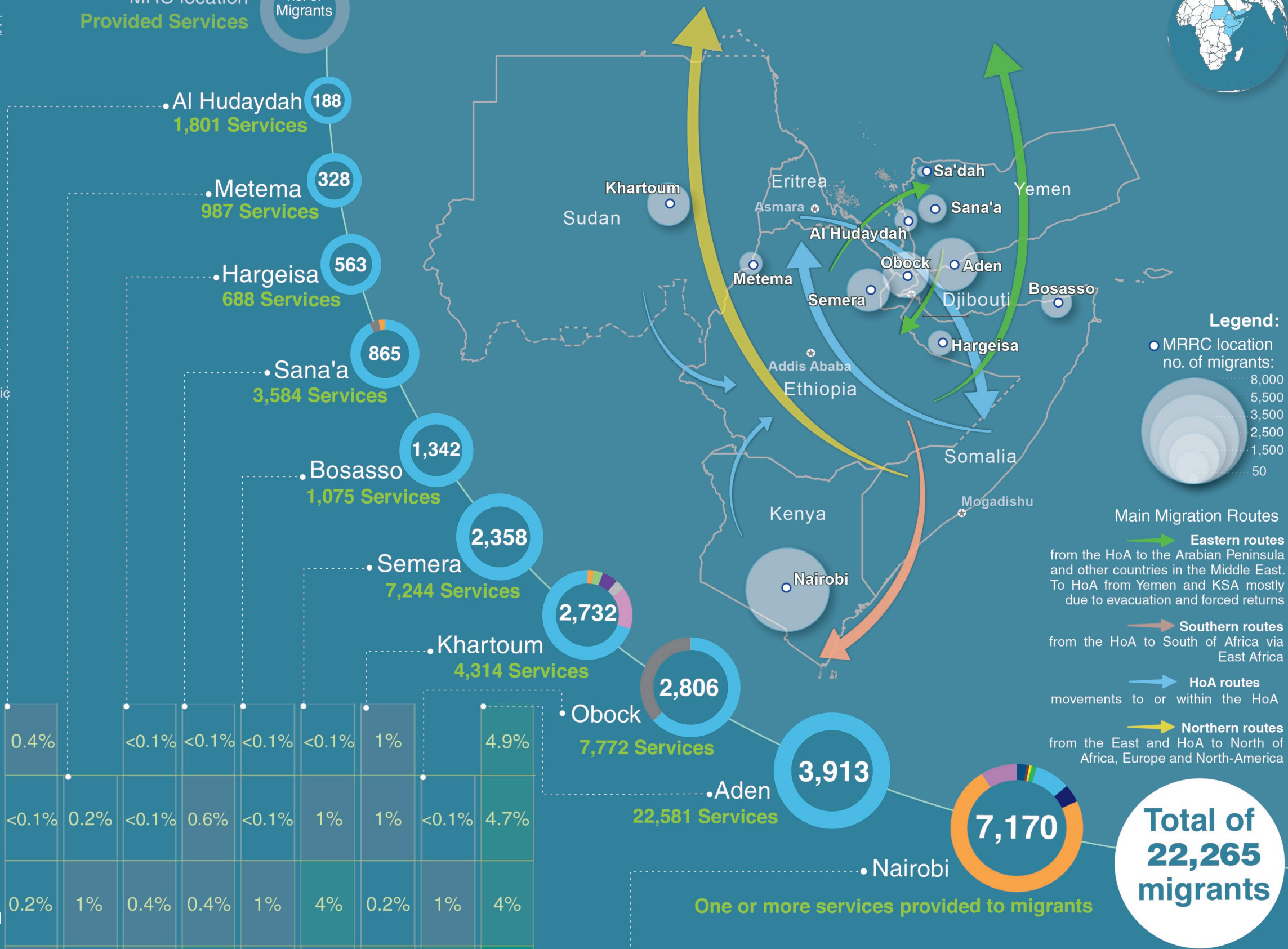
- Ethiopia
- Somalia
- Eritrea
- Sudan
- Uganda
- South Africa
- United Republic of Tanzania
- Congo
- Nigeria
- Others
- Unknown

- Outreach /Counselling
- Other
- Psychosocial Support
- Medical Assistance
- Emergency Assistance

MRC location
 Provided Services

Nationality
 no. of Migrants

The 11 MRRCs are located in the Horn of Africa (HoA), Sudan, Kenya and Yemen.



Main Migration Routes

- Eastern routes** (green arrow): from the HoA to the Arabian Peninsula and other countries in the Middle East. To HoA from Yemen and KSA mostly due to evacuation and forced returns
- Southern routes** (orange arrow): from the HoA to South of Africa via East Africa
- HoA routes** (blue arrow): movements to or within the HoA
- Northern routes** (yellow arrow): from the East and HoA to North of Africa, Europe and North-America

Total of 22,265 migrants

One or more services provided to migrants

The ECWC in Nairobi provides primary health care services to vulnerable migrants communities (26%) and also to vulnerable host communities and Internally Displaced Persons from the northern part of Kenya (14,651 individuals, 74%).

- Services Provided in the ECWC:
- Medical (ambulatory and consultation)
 - Family Planning
 - Diagnosis Tests
 - Child welfare
 - Reproductive Health
 - Community outreach

MRRC Service Provision

percentages are related to overall sum of services across 10 MRRCs (excluding Nairobi)
 numbers are related to services provided at the MRRCs

| Service | Al Hudaydah | Metema | Hargeisa | Sana'a | Bosasso | Semera | Khartoum | Obock | Aden | Nairobi |
|-----------------------|-------------|--------|----------|--------|---------|--------|----------|-------|------|---------|
| Outreach /Counselling | 0.4% | <0.1% | <0.1% | <0.1% | <0.1% | 1% | <0.1% | 4.9% | | |
| Other | <0.1% | 0.2% | <0.1% | 0.6% | <0.1% | 1% | 1% | <0.1% | 4.7% | |
| Psychosocial Support | 0.2% | 1% | 0.4% | 0.4% | 1% | 4% | 0.2% | 1% | 4% | |
| Medical Assistance | 0.4% | <0.1% | 0.4% | 3% | 0.1% | 0.1% | 6% | 4% | 9% | |
| Emergency Assistance | 3% | 1% | 1% | 3% | 1% | 10% | 1% | 10% | 23% | |